

STRATEGIC SUMMMER FRAMEWORK

FOR SCHOOL SYSTEM LEADERS

Design and carry out an **integrated decision-making process** that aligns strategy and resources to address increased student and family need in the context of likely budget reductions and physical distancing requirements

Assess and define **student and family reentry and recovery needs** (reconnection, academic and social-emotional)

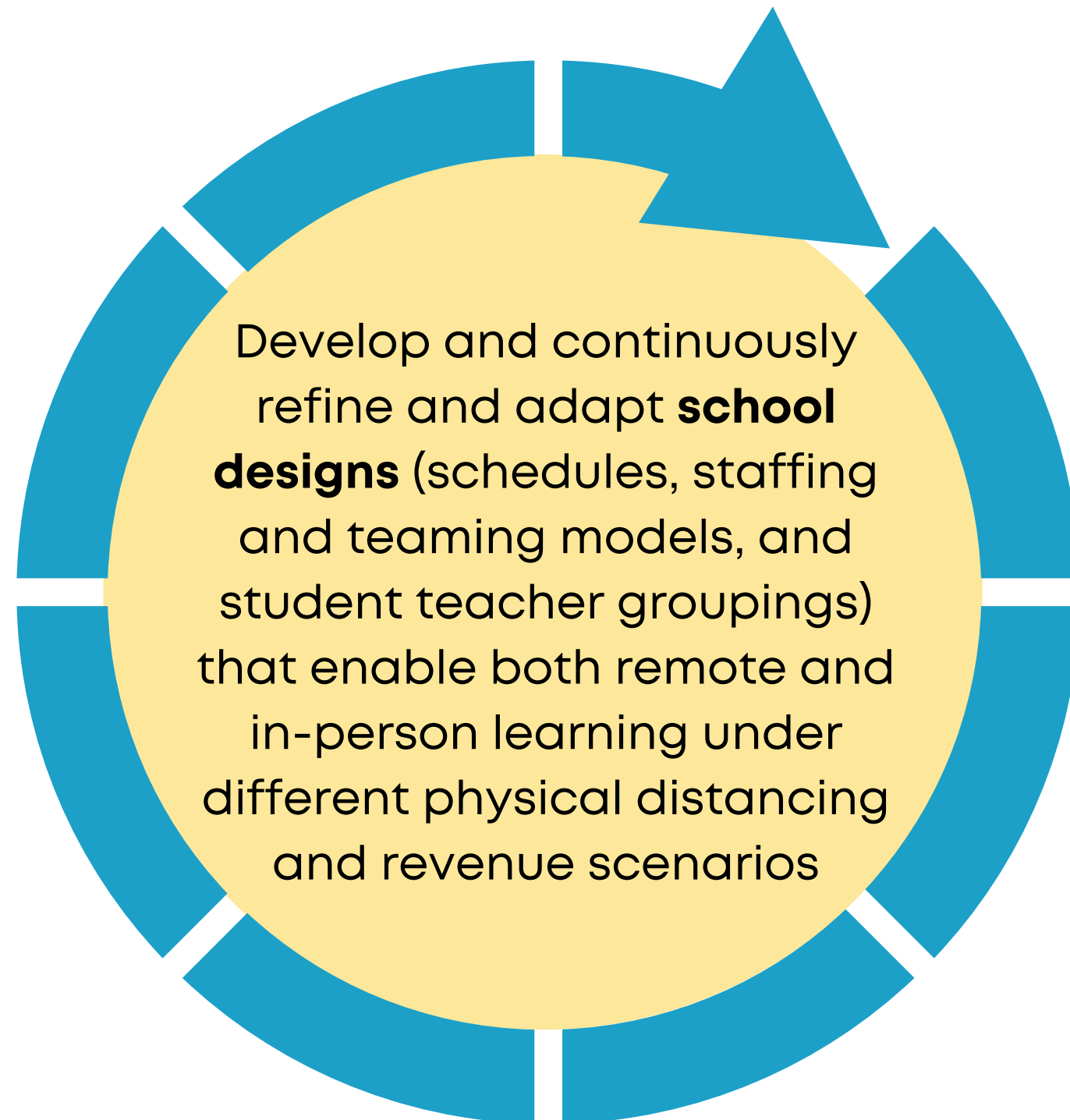


Design an **academic recovery strategy and instructional models**



Define **technology and operations investments and constraints** needed to implement remote learning and physical distancing

NOTE: Since these are not focus areas for ERS, we will share examples from the field in these pieces of the framework, but not custom tools or deep support.



Develop **budget and staffing scenarios** at different revenue levels that enable recovery school designs and build toward sustainable transformation



Adopt policies or work toward state and CBU policy shifts that enable the new ways of working and **more flexible organization of time and staff** needed for new school models

CYCLES OF CONTINUOUS IMPROVEMENT & ADAPTATION